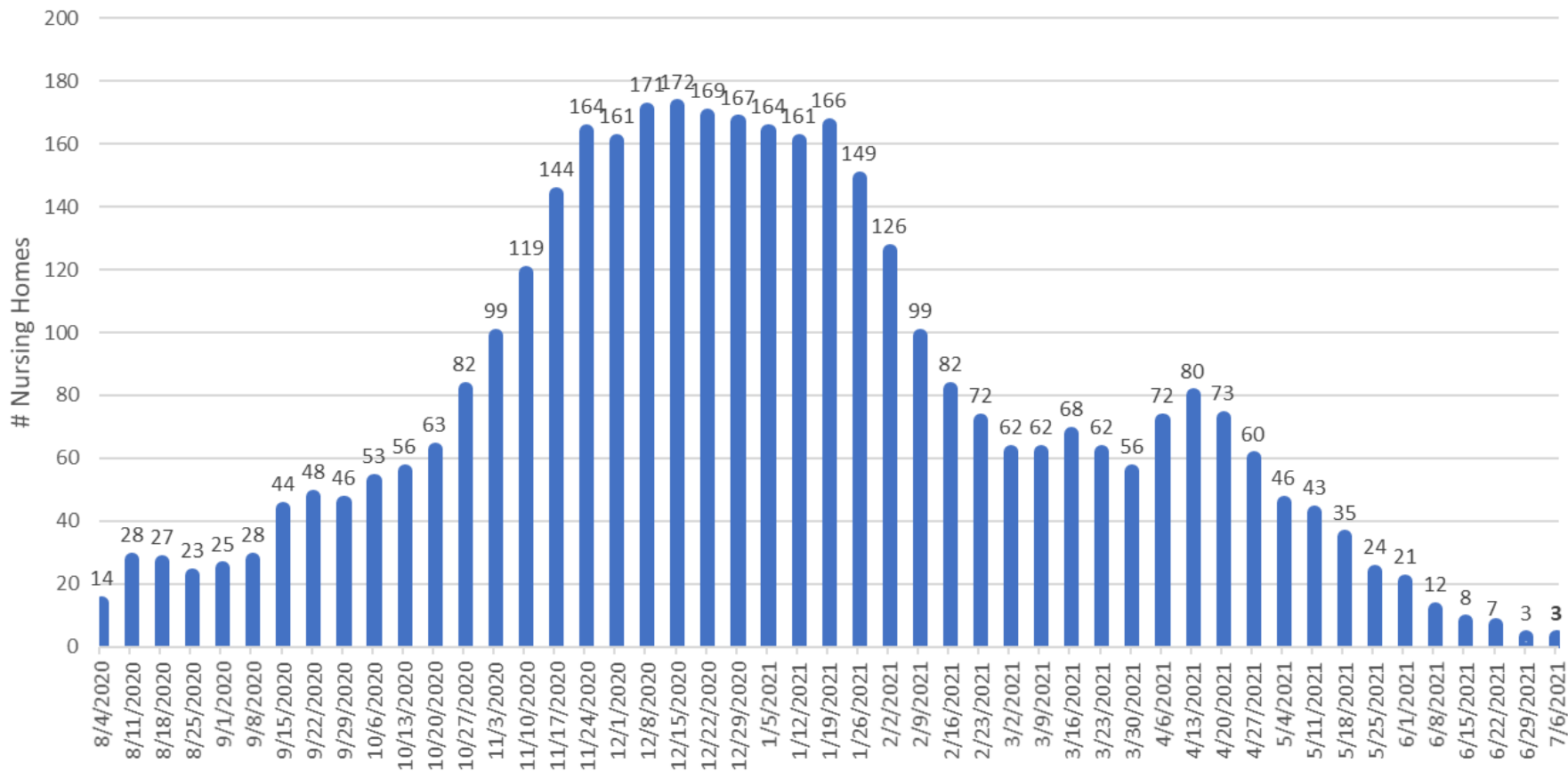


# Nursing Home Data

# Nursing Homes with Newly-Diagnosed COVID-19 Among Residents AND/OR Staff in the Most Recent 14-day Period

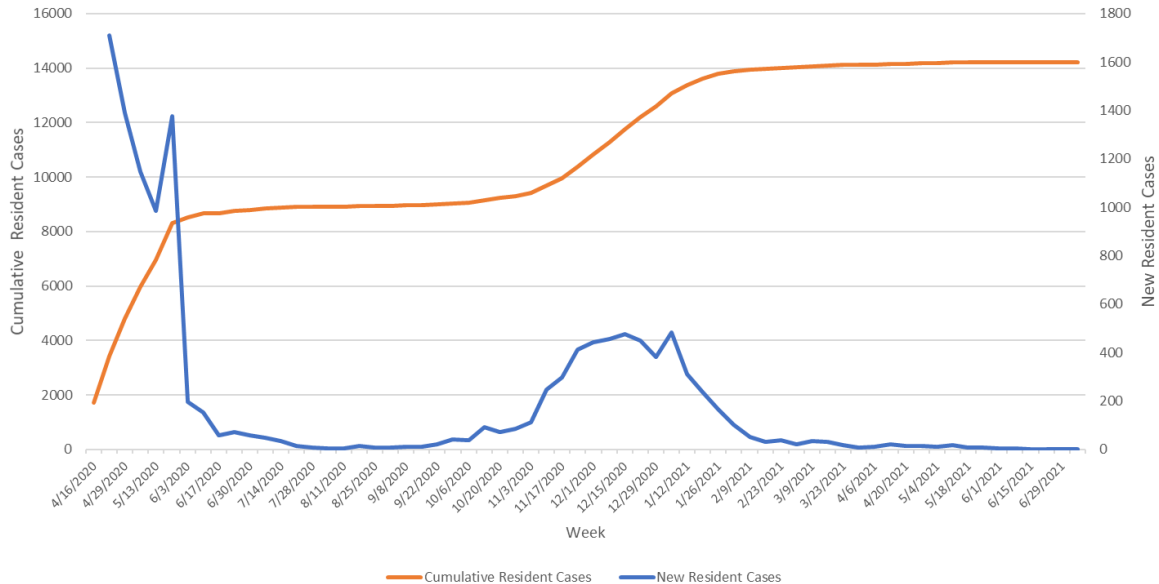


# Nursing Home Resident Incidence, statewide

April 16, 2020 – July 29, 2021

**Resident Census: 18,657**

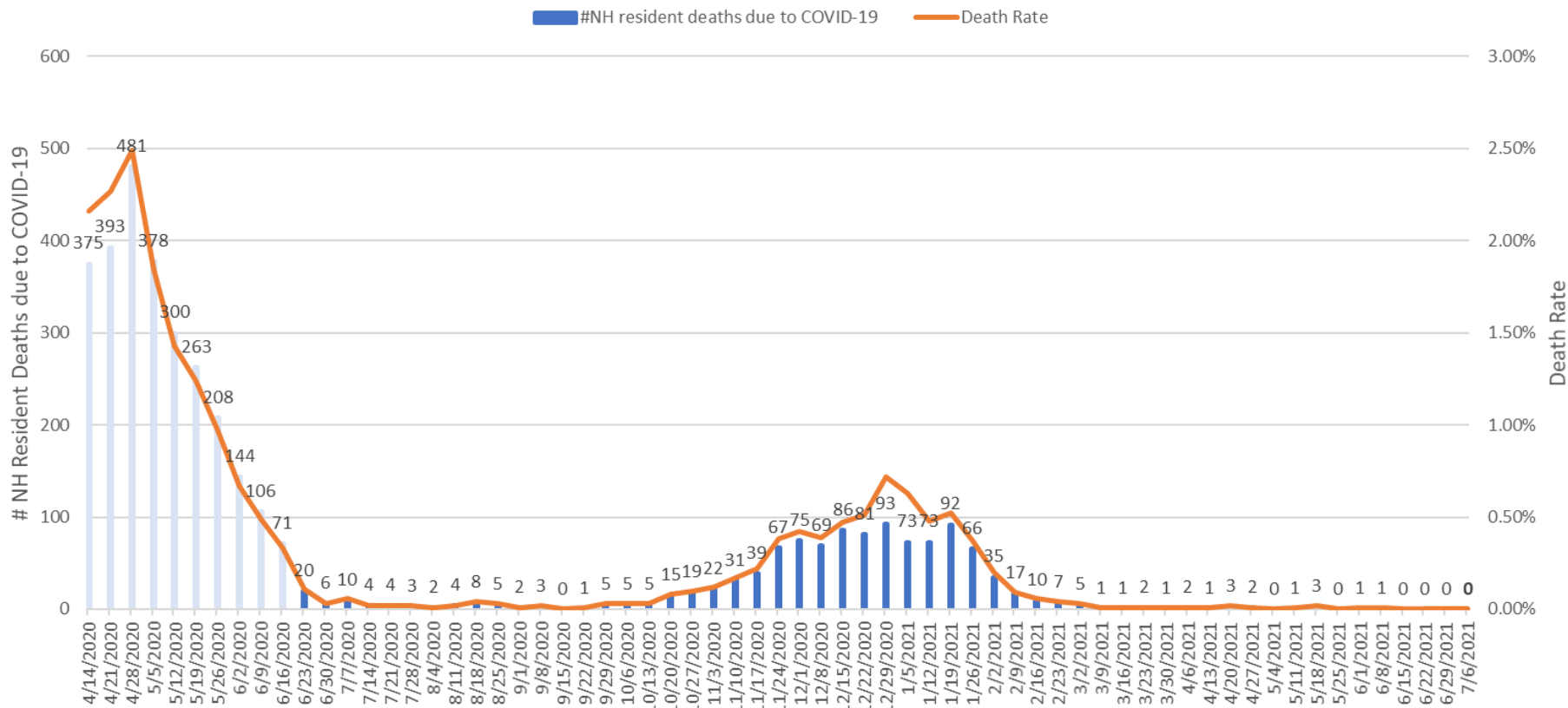
Nursing Home Resident Cases - Connecticut, April 16, 2020- July 6, 2021



Date Reported	New Resident Cases (diagnosed that week)
6-April	10
13-April	20
20-April	13
27-April	14
4-May	10
11-May	17
18-May	7
25-May	6
1-Jun	4
8-Jun	5
15-Jun	1
22-Jun	1
29-Jun	0
6-July	1

Facility Metrics	#Nursing Homes
New res. cases, last 2 weeks	1 (-0)
No new res. cases, >2 weeks	208

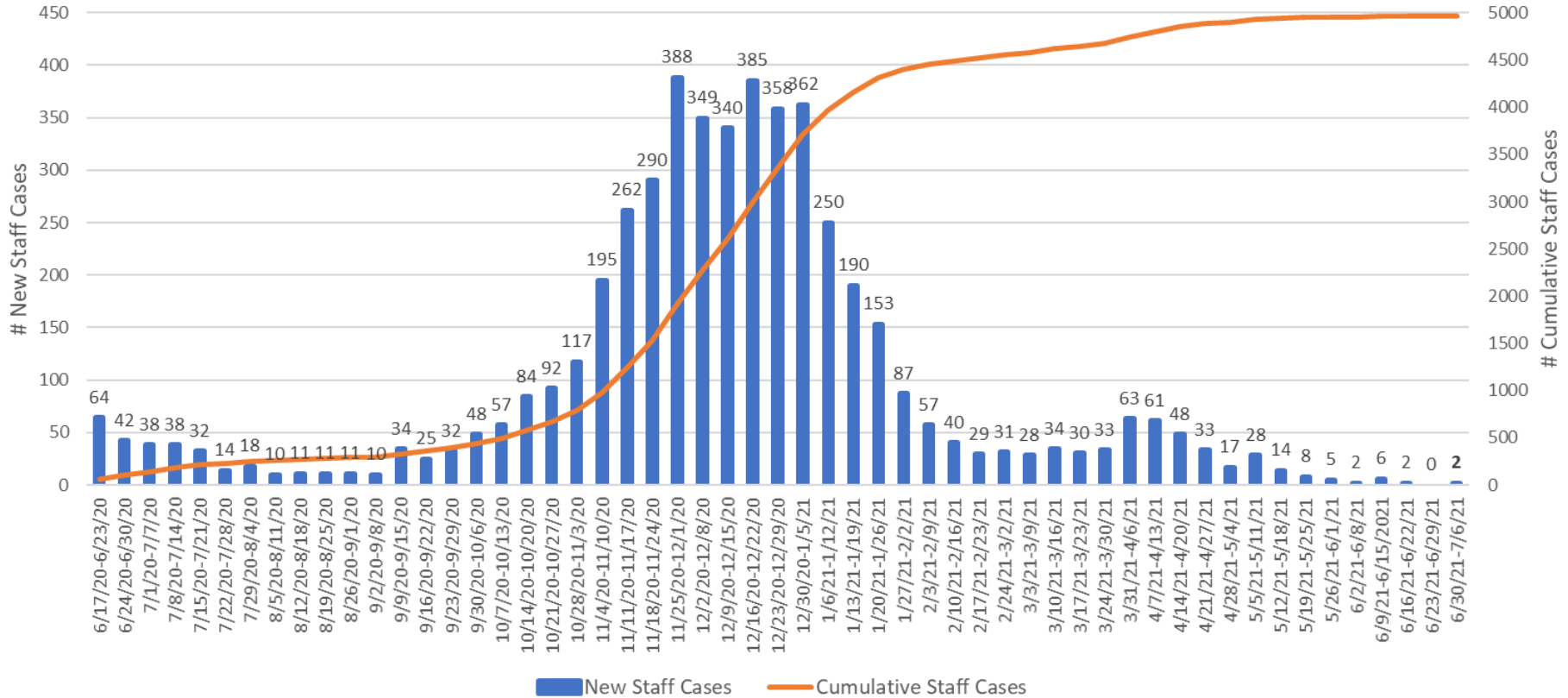
# Nursing Home Resident Deaths Due to COVID-19 4/15/2020-7/6/2021



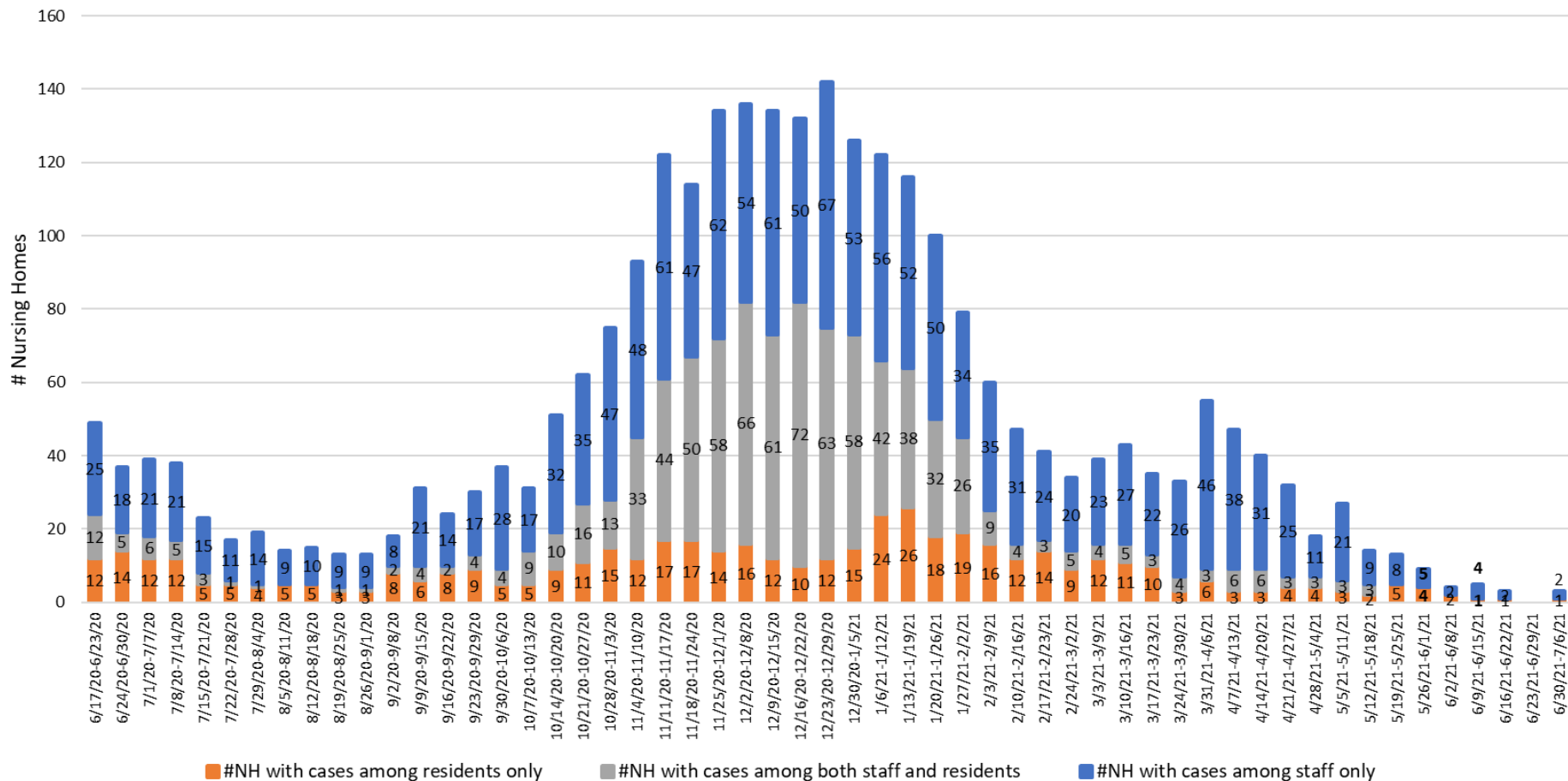
Note: Light blue= OCME lab-confirmed and suspected deaths due to COVID-19, Darker blue= NHSN data

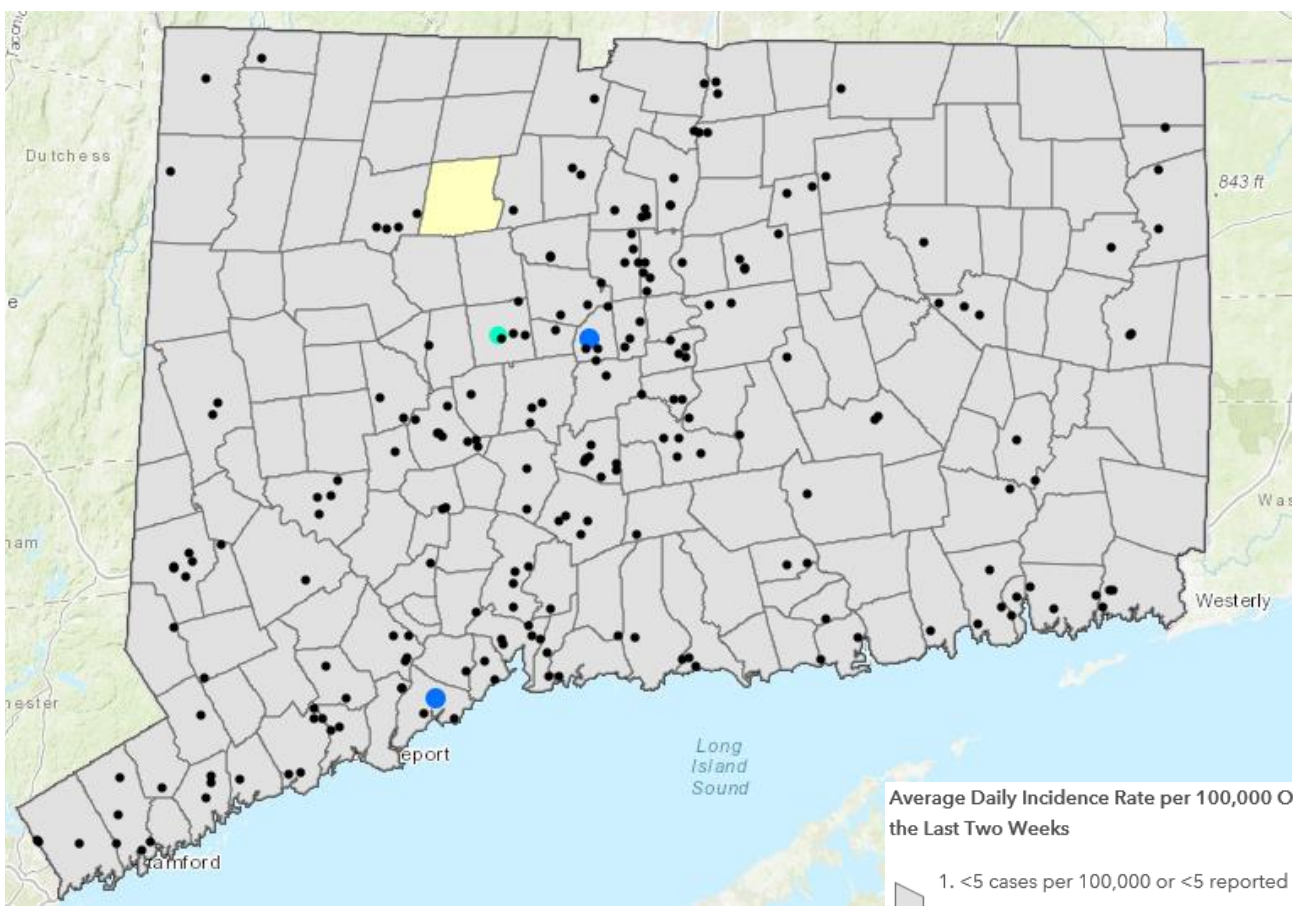
# Staff Cases in Connecticut Nursing Homes

## June 17, 2020–July 6, 2021



# Nursing Homes with Positive Staff or Residents June 17, 2020-July 6, 2021





**6/30/21-7/6/21**

**NHs with No New Cases**



**NHs with New Cases Among Staff**

# New Staff Cases:



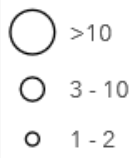
**NHs with New Cases Among Residents**

# New Resident Cases:

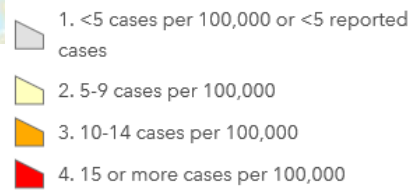


**NHs with New Cases Among Staff and Residents**

Custom



Average Daily Incidence Rate per 100,000 Over the Last Two Weeks



# Nursing Home COVID Vaccination Rates

as of June 27, 2021

## Resident Vaccination Rates (205 NHs reported)

- Average 89%, Median 91%
- Range 46-100%

**Overall- 94% of reporting NHs have resident vaccination rates  $\geq$  75%**

## Staff Vaccination Rates (205 NHs reported)

- Average 70%, Median 72%
- Range 31-98%

**Overall- 39% of reporting NHs have staff vaccination rates  $\geq$  75%**

- 89% of reporting NHs have staff vaccination rate  $\geq$  50%
- 55% of reporting NHs have staff vaccination rate  $\geq$  70%



# Routine Testing of Staff

CMS-required parameters and frequency: [CMS Memo: QSO-20-38](#)

**Antigen OR PCR testing are acceptable.**

If a **positive case** is identified via **antigen testing** (regardless of symptoms), DPH strongly encourages LTCFs to send a specimen to **State Public Health Laboratory (SPHL)**.

- SPHL can provide confirmatory PCR results in <48 hrs, M-F.
- A [COVID-19 Clinical Test Requisition Form](#) is required for each specimen.
- Transport specimen to state public health lab (transport COLD – with ice pack)

# COVID-19 Variant Surveillance

- Multiple SARS-CoV-2 variants are circulating globally
- Routine analysis of genetic sequence data enables public health agencies to identify and characterize variant viruses with:
  - Ability to spread more quickly
  - Ability to cause either milder or more severe disease
  - Ability to evade detection by specific tests
  - Decreased susceptibility to medical therapies that employ monoclonal antibodies
  - Ability to evade natural or vaccine-induced immunity
- Variant data is available on a national and state level
  - [CDC COVID Data Tracker](#)
  - [CT DPH COVID-19 Tracker](#) (Weekly COVID-19 reports published Thursdays)
  - [Connecticut SARS-CoV-2 Variant surveillance report](#) (Yale)

# Nursing Home Lab Survey

- DPH relies on lab specimens to conduct SARS-CoV-2 variant surveillance
- DPH needs to know the labs that serve you
- Please collaborate with others in your facility to submit a single response **by the end of the day today (July 14)**
- The information provided in this survey will help us better serve you!
- [www.surveymonkey.com/r/37PXMPZ](https://www.surveymonkey.com/r/37PXMPZ)

# Adjustments to DPH Publication of LTC COVID-19 Data

## Nursing Home Public Reports

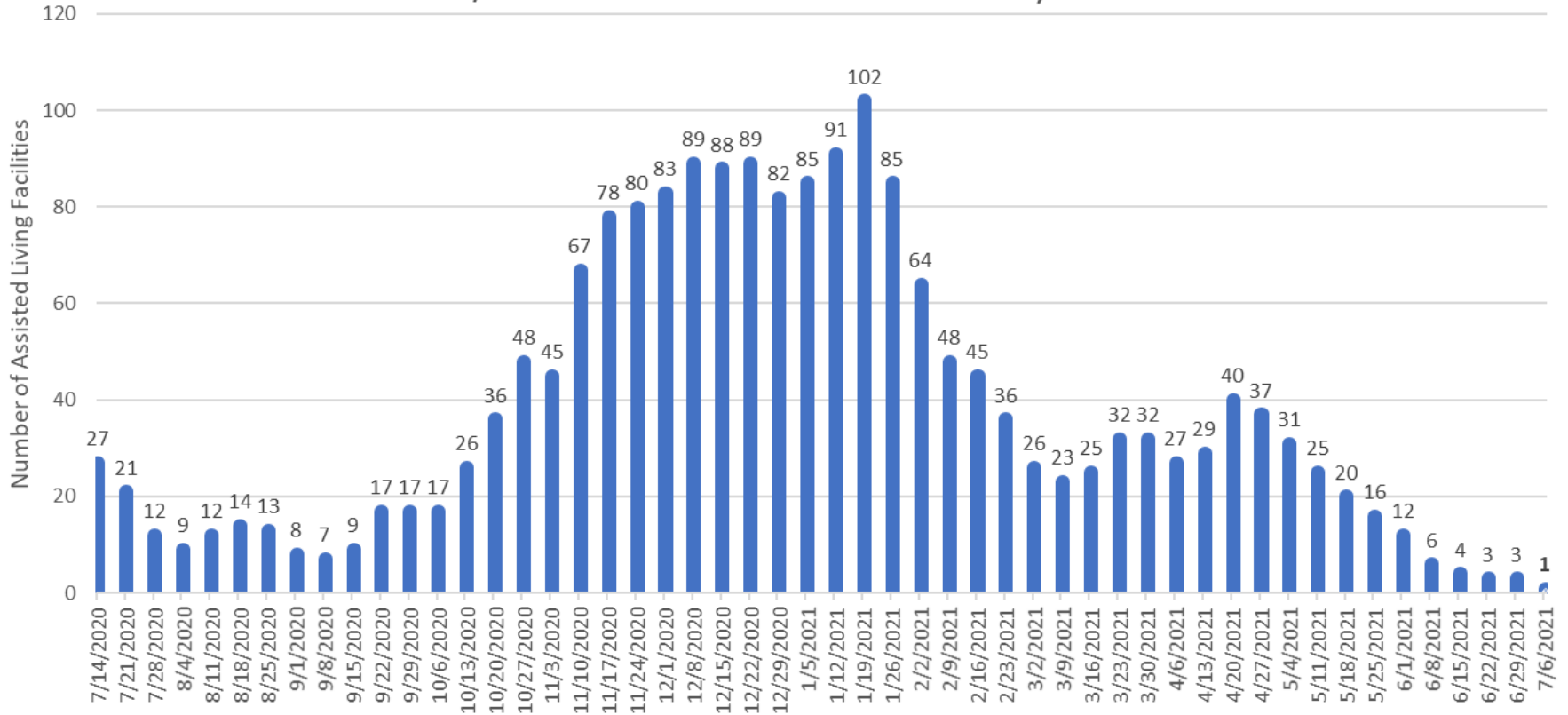
- DPH will now publish NH reports MONTHLY on last Thursday of each month.
- **Reporting from NHs to NHSN is still required weekly.**
- Prior LTC reports can still be found on our [website](#), and nursing home COVID-19 data are now easily accessible on the [CMS Nursing Home Data page](#).

## Assisted Living Public Reports

- DPH will no longer publish regular AL reports.
- Assisted living is NO LONGER REQUIRED to report to DPH weekly.
- Reporting of "institutional outbreaks" is mandated (CGS Sec 19a2a and 19a-215)
  - A single case of COVID-19 is considered an outbreak in a LTCF
  - **SALSAs: call the HAI-AR Program (860-509-7995) to report COVID-19 cases**

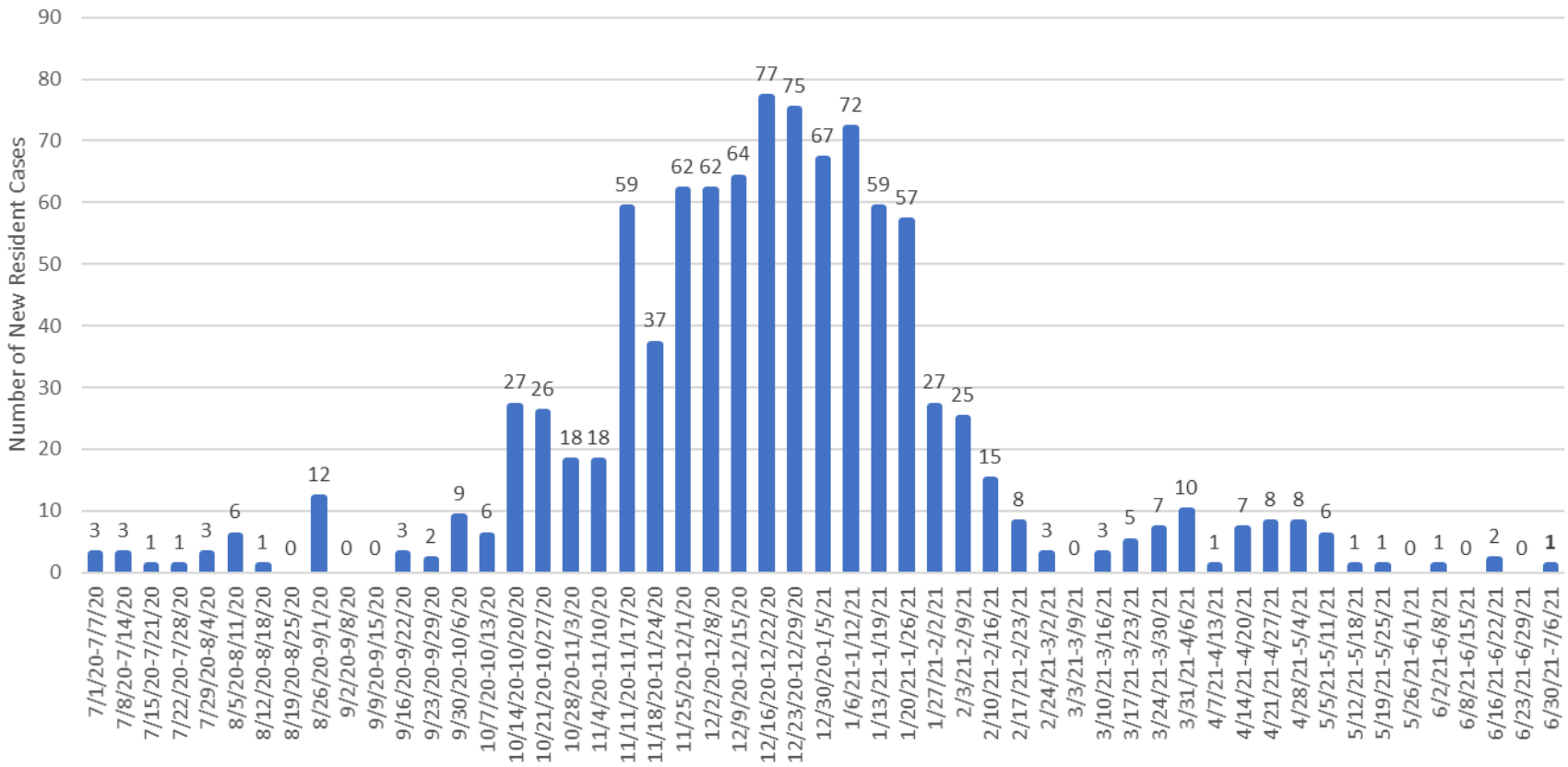
# Assisted Living Data

# Assisted Living Facilities with Newly-Diagnosed COVID-19 Among Residents AND/OR Staff in the Most Recent 14-day Period

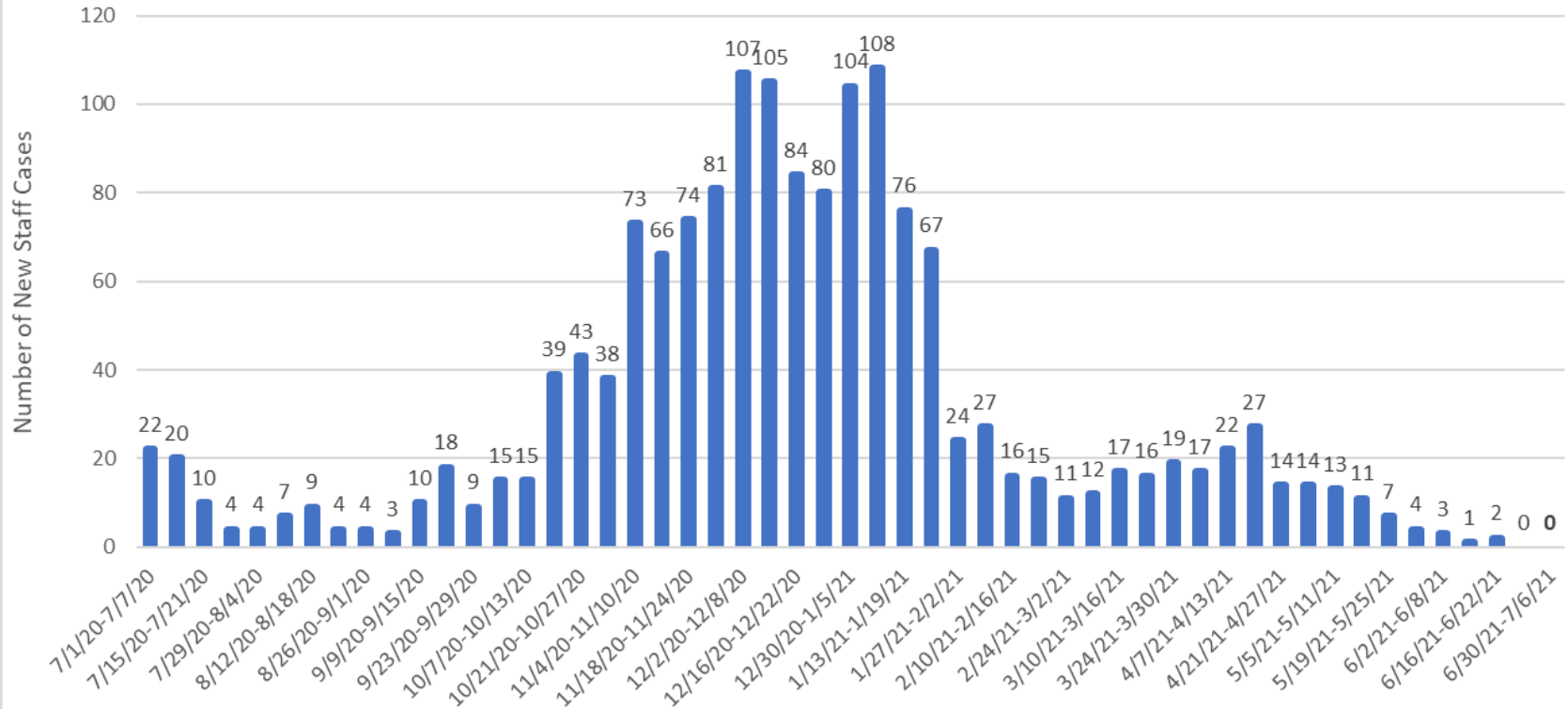


# Assisted Living Resident Census: 7,128

## New Resident Cases in CT Assisted Living Facilities July 1, 2020-July 6, 2021



## New Staff Cases in CT Assisted Living Facilities July 1 2020-July 6, 2021





## Assisted Living Facilities with Positive Staff or Residents July 1, 2020-July 6, 2021

