

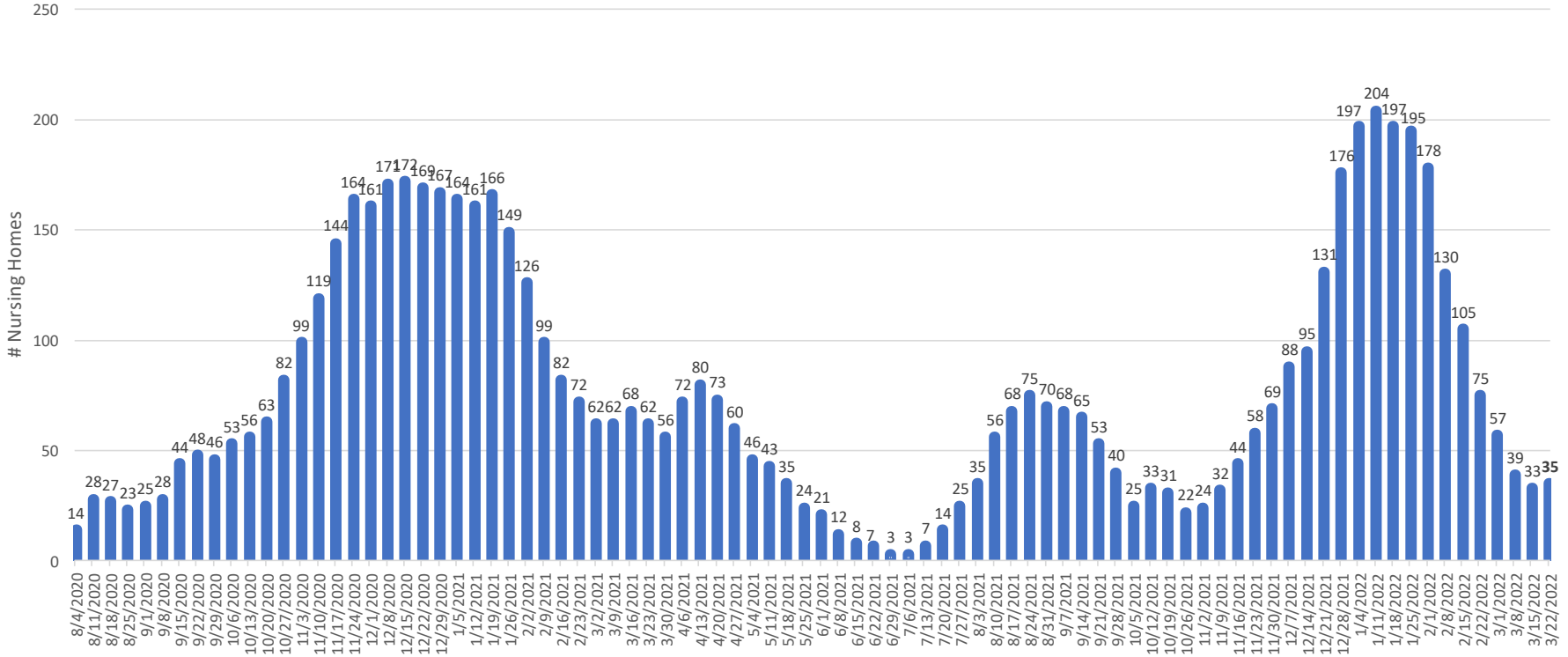


# Agenda

## HAI-AR

- \* Nursing Home Data
- \* SARS-CoV-2 Test Reporting

# Nursing Homes with Newly-Diagnosed COVID-19 Among Residents AND/OR Staff in the Most Recent 14-day Period

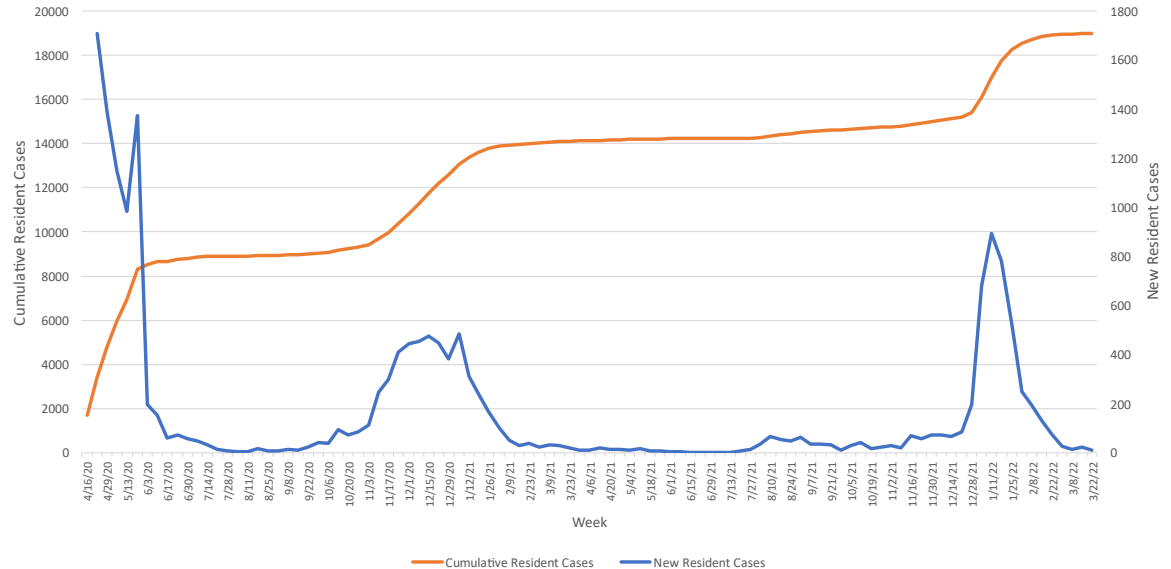


# Nursing Home Resident Incidence, statewide

April 16, 2020 – March 22, 2022

Resident Census: 18,077

Nursing Home Resident Cases - Connecticut  
April 16, 2020—March 22, 2022



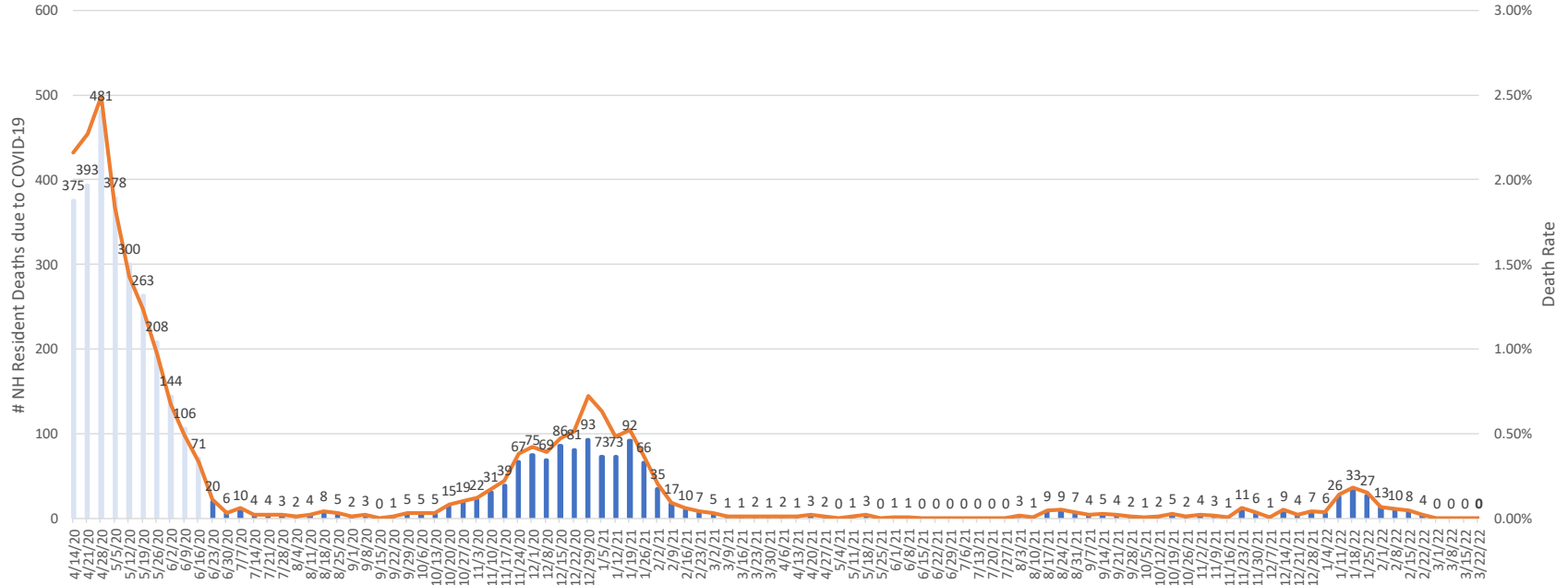
Date Reported	New Resident Cases (diagnosed that week)
4-Jan	680
11-Jan	893
18-Jan	783
25-Jan	519
1-Feb	248
8-Feb	192
15-Feb	131
22-Feb	71
1-Mar	27
8-Mar	13
15-Mar	22
22-Mar	10

Facility Metrics	#Nursing Homes
New res. cases, last 2 weeks	12 (-21)
No new res. cases, >2 weeks	193

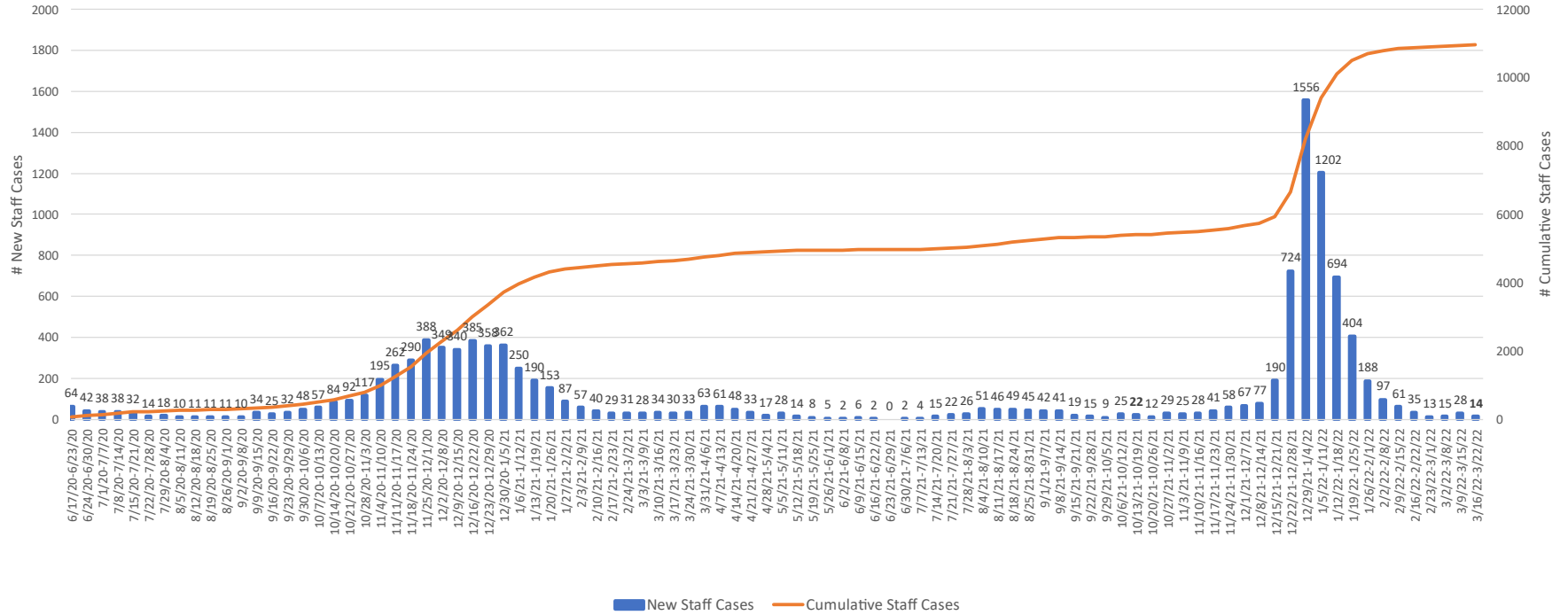
# Nursing Home Resident Deaths Associated to COVID-19

## 4/15/2020 — 3/22/2022

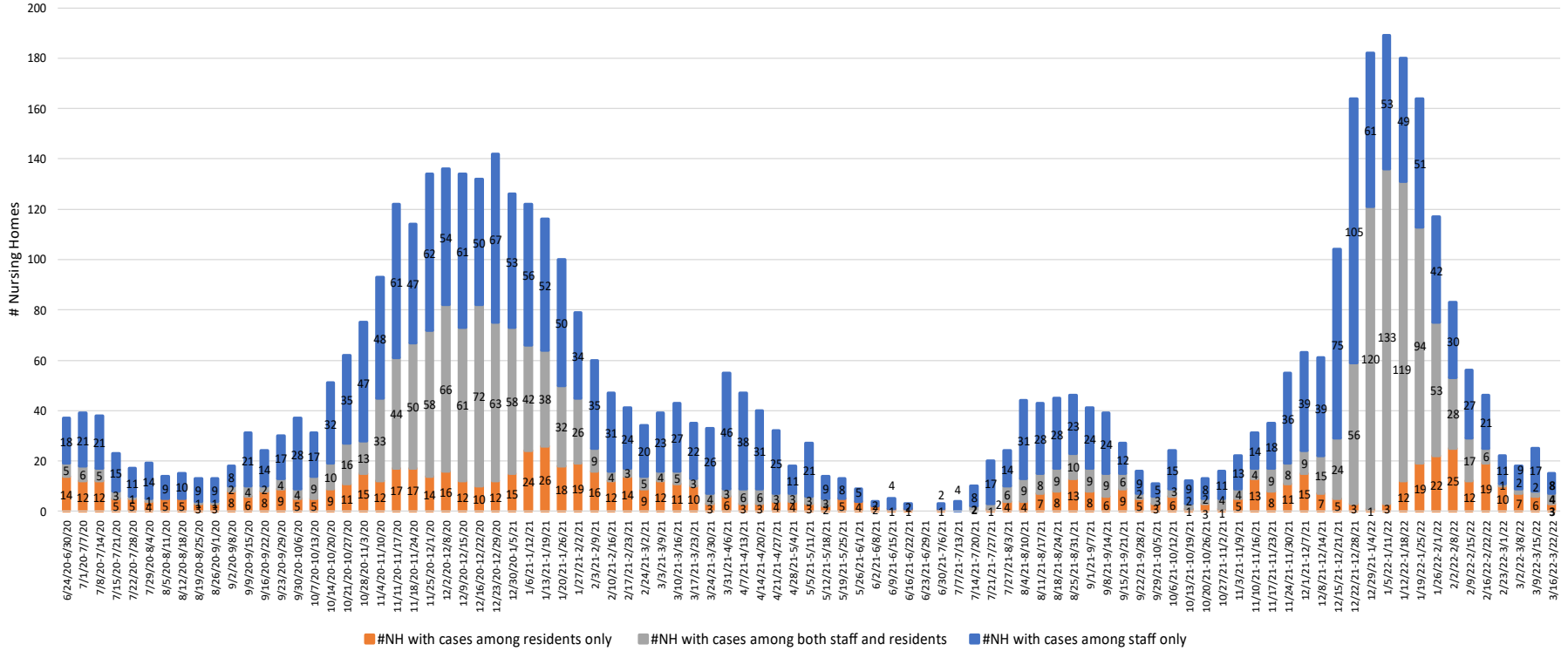
■ #NH resident deaths due to COVID-19    
 — Death Rate

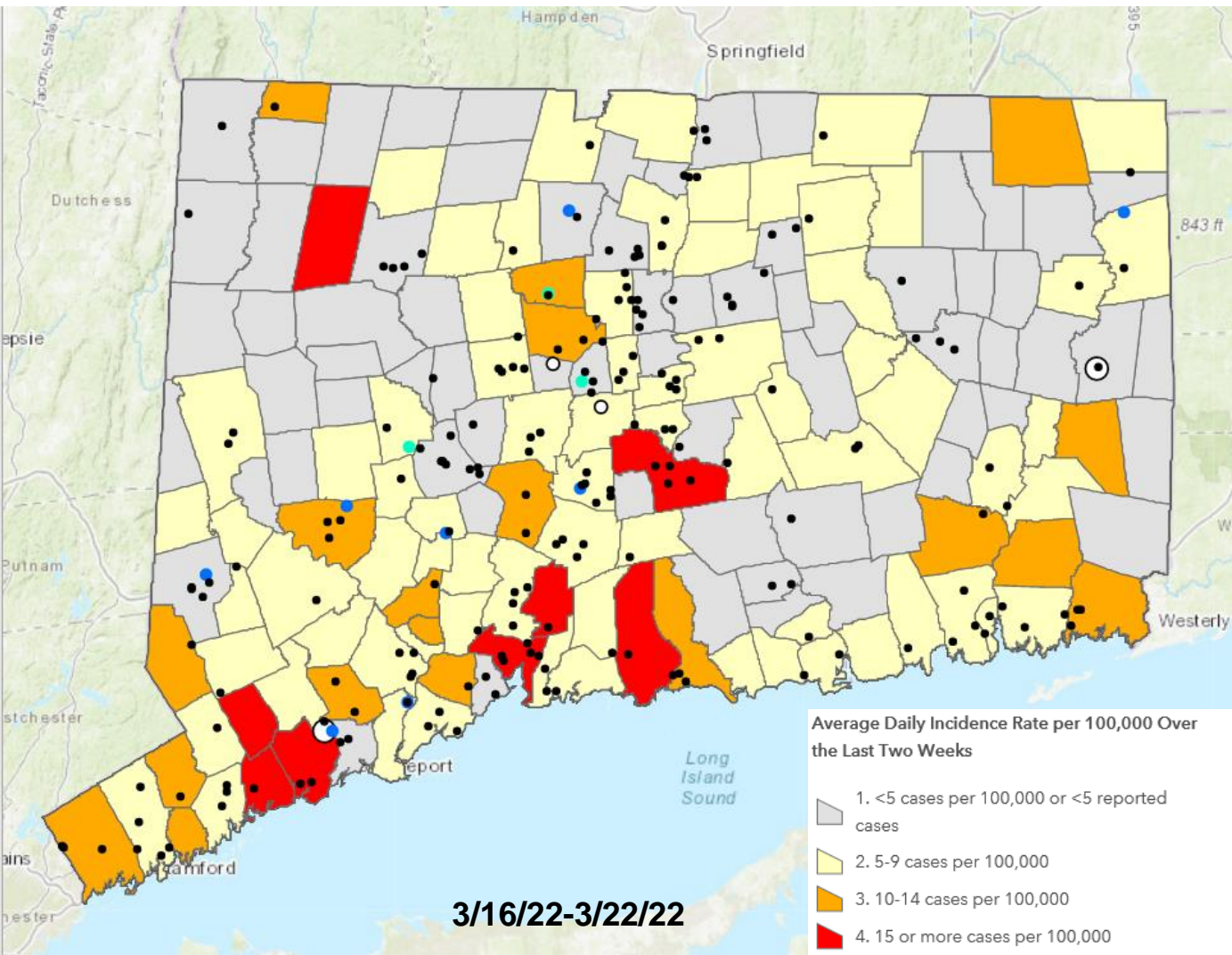


## Staff Cases in Connecticut Nursing Homes June 17, 2020— March 22, 2022



## Nursing Homes with Positive Staff or Residents June 17, 2020 — March 22, 2022



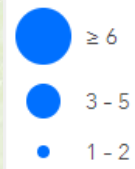


Legend

NHs with No New Cases

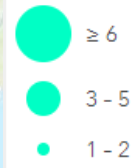
NHs with New Cases Among Staff

# New Staff Cases:



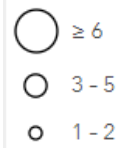
NHs with New Cases Among Residents

# New Resident Cases:

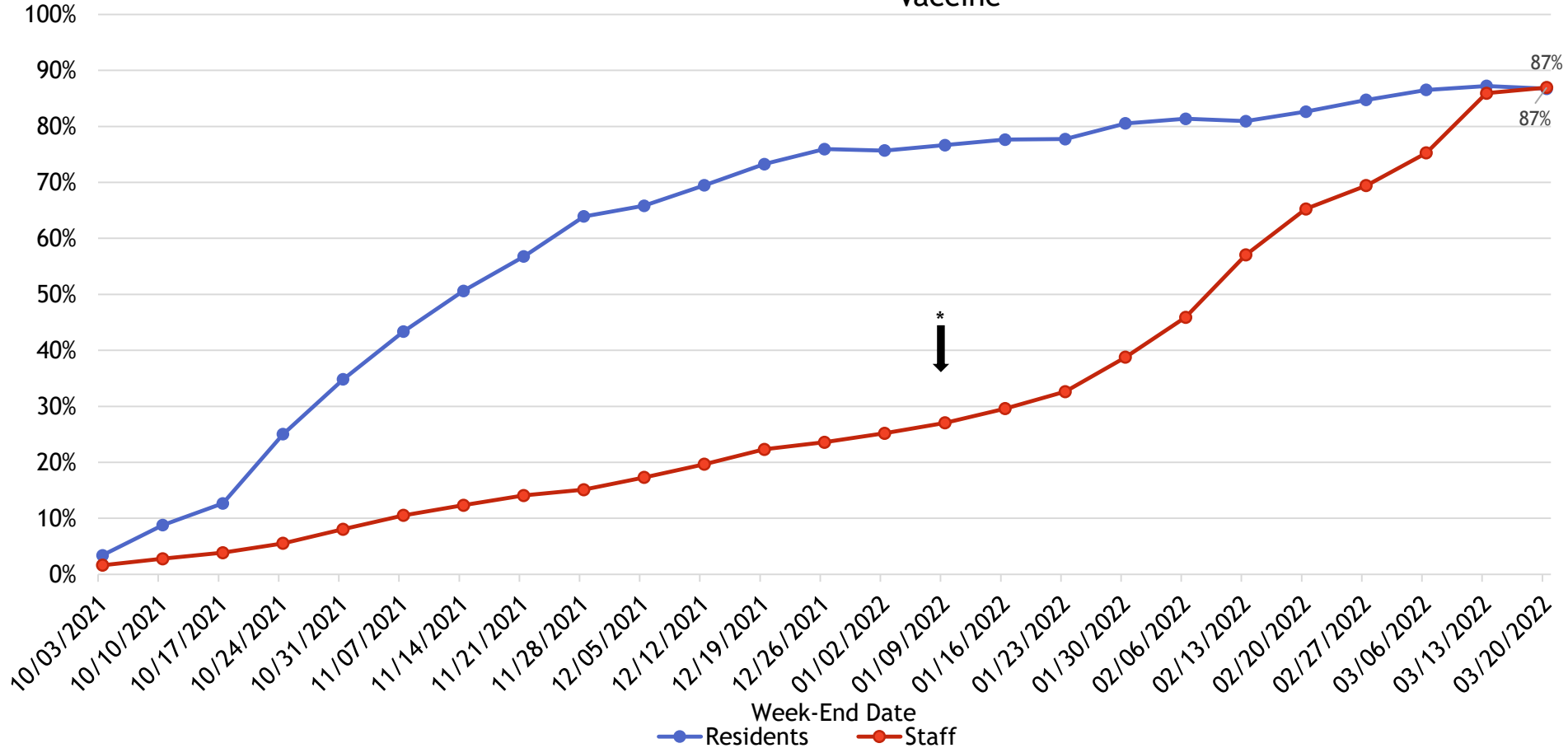


NHs with New Cases Among Staff and Residents

Custom



# Percentage of Fully-Vaccinated Individuals Who Received an Additional Dose of COVID-19 Vaccine



\*Executive Order 14B was signed on 01/09/2022 requiring nursing home staff to receive booster doses.





# Community Transmission Tracker

## COMMUNITY TRANSMISSION

Focuses on how much diseases is spreading within the community

Classifications: Low, Moderate, Substantial, High

Combination of 2 Metrics:

1. Total new COVID-19 cases per 100,000 persons in the last 7 days
2. Percentage of positive SARS-CoV-2 diagnostic nucleic acid amplification tests (NAAT) in the last 7 days

Health care settings should continue to use [CDC's infection prevention and control recommendations for healthcare settings](#) which use community transmission as a metric for stratifying some IPC measures (e.g., use of source control, routine testing).

Nursing homes will continue to use community transmission

Community level recommendations  
**DO NOT** apply for healthcare  
settings.

Source: [United States COVID-19 County Level of Community Transmission](#)

# Community Transmission

**Connecticut**  
[State Health Department](#)

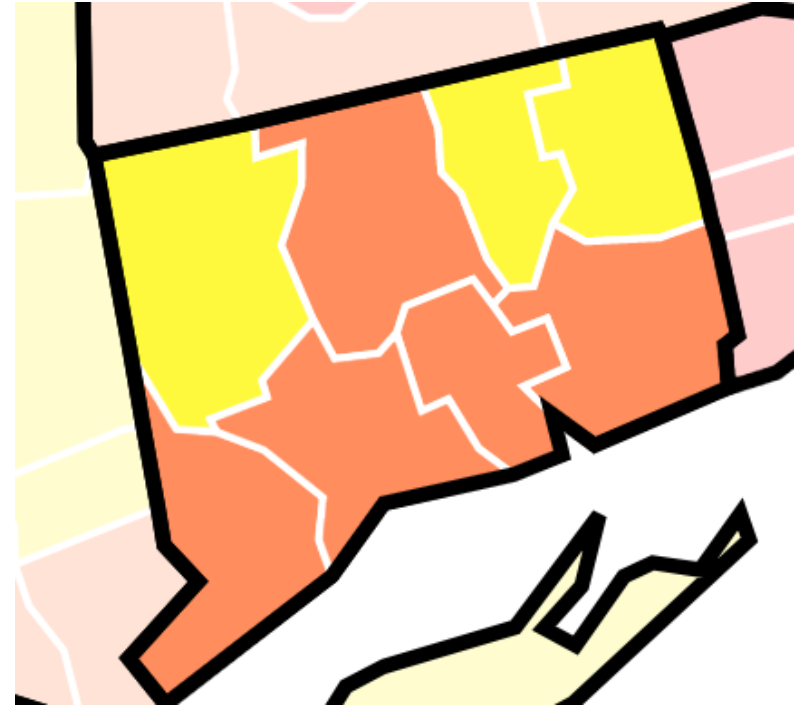
**7-day Metrics**

Cases	1,965
% Positivity	3-4.9 %
Deaths	68
% of Population ≥ 5 Years of Age Fully Vaccinated	82.4%
New Hospital Admissions (7-Day Moving Avg)	20.29

**Data Type:**

**Map Metric:**

**On this page:**  
[Cases & Deaths](#)  
[Testing](#)  
[Vaccinations](#)  
[Hospitalizations](#)  
[Community Characteristics](#)  
[Data Downloads and Footnotes](#)



\*as of 3/29/2022



# SARS-CoV-2 Test Reporting

On March 2022, HHS released updated [guidance](#) that makes the reporting of SARS-CoV-2 negative test results for antigen tests (POC) performed by CLIA certified laboratories **optional**.

\* DPH is adopting this change in reporting effective **April 4, 2022**.

Type of Test	Positive Results	Negative & Inconclusive Results	Location
NAAT-testing conducted in a facility CLIA certified to perform moderate- or high-complexity tests	Required	Required	For example, hospital, commercial, public health and other labs
Other testing for SARS-CoV-2 antigen or rapid PCR testing (e.g., using the Abbott ID NOW)	Required	<ul style="list-style-type: none"><li>• <b>No longer required to report.</b></li></ul>	<ul style="list-style-type: none"><li>• Testing conducted in a setting operating under a CLIA certificate of waiver.</li><li>• Laboratories performing non-NAAT tests</li></ul>
Antibody testing	<b>No longer required to report</b>	<b>No longer required to report</b>	Tests used to determine previous infection with SARS-CoV-2 in any setting



---

**SAVE THE DATE**  
**NEXT LTC MAP Meeting**  
**April 20, 2022**