



Rhode Island Long Term Care Mutual Aid Plan 2023 Annual Education Conference

REGISTER TODAY

WEDNESDAY, JUNE 7

Crown Plaza Hotel Providence
Warwick (Airport)
801 Greenwich Avenue
Warwick, RI 02886

5 CEUs for attending the 2023 Annual Education Conference. You will receive a Certificate of Attendance at the end of the conference.

[Click Here to Register](#)

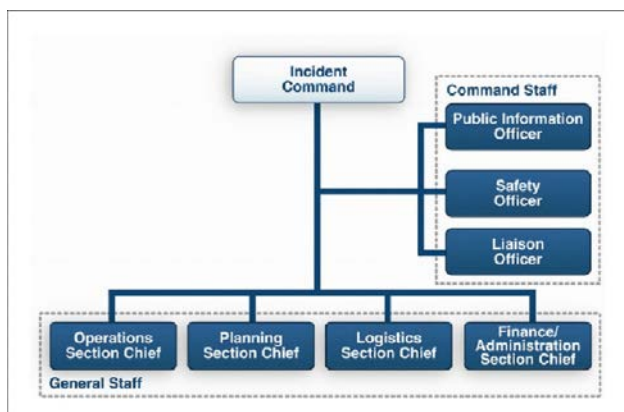
Session
9:00 am – 3:00 pm
(registration check-in begins at 8:00 am)

SESSION SCHEDULE



Top CMS Emergency Management Citations That Were Issued in 2022

Presenter: Jim Garrow



What You Need to Do in the First Hour of Your Emergency

- Establishing an IAP (Incident Action Plan)
- ICS (Incident Command System) Positions and how they interact

Presenter: Andy McGuire



ProtectAdvisr™ The New Mutual Aid Plan Web-Based Management System

- What is it and when is it coming

Presenter: Andy McGuire



Fall Exercises

- Review 2022 Key After Action Report Items
- Review 2023 Exercise Dates and Objectives

Presenter: Andy McGuire



12:00 - 1:00 pm
Buffet Lunch



1:00 - 3:00 pm
Tabletop Exercise

- Have your facility's emergency operations plan (facility disaster plan) available during the tabletop exercise*.

**Meets the annual CMS exercise requirements for your second exercise.*

Presenters: Jim Garrow + Andy McGuire

[REGISTER NOW](#)

MEET YOUR PRESENTERS



ANDY MCGUIRE

Lead Fire + Emergency Management Consultant
CT + RI Long Term Care Mutual Aid Plans Program Manager



JIM GARROW

Senior Fire + Emergency Management Consultant
MassMAP Program Manager

CONFERENCE SPONSORS



DON'T MISS OUT



GET UPDATES + FRESH IDEAS DELIVERED TO YOUR INBOX

Sign up to receive the latest updates, news and insights. By joining, you're getting first access to new insights from our experts, case studies, free educational webinars, company updates and so much more.

[SIGN UP TODAY](#)

Have a Question?

[CONTACT](#) | [ABOUT](#) | [INSIGHTS](#) | [jensenhughes.com](https://www.jensenhughes.com)

FOLLOW US



We are the global leader in safety, security and risk-based engineering and consulting. Serving communities around the world, our fire protection engineers, technical experts, architects and consultants are dedicated to making your projects successful. Since 1939, our fire protection engineering consultants have supported what matters most to our global clients with innovative, compliant and reliable solutions.

[Click here to opt out and manage your preferences.](#)

Jensen Hughes | 3610 Commerce Drive, Suite 817, Baltimore, MD 21227, United States
© 2022 Jensen Hughes, Inc. All Rights Reserved.